

“New & Improved”

The most innovative ATS on the market

FRONT



REAR



**Intelligent, Rack Mounted,
Automatic Transfer Switch**

KWXM-ATS2

KWXM-ATS16A10X2-H2C20

**Total Power Monitoring &
Outlet Metering**



www.pduexpertuk.com

- ✓ LCD Display
- ✓ USB 3.0 Sensor port
- ✓ Monitors total kWh and power factor
- ✓ Input and output voltage monitoring
- ✓ Operates in hot-rack environments up to 55 °C
- ✓ SMS, SNMP, and email notifications
- ✓ 10 × lockable IEC C13 outlets and 2 × IEC C19 outlets
- ✓ Built-in environmental monitoring technology
- ✓ Infrared monitoring
- ✓ Temperature and humidity alarm
- ✓ Water leakage alarm
- ✓ Rack door open alarm
- ✓ Smoke alarm
- ✓ Support for up to 8 plug-and-play sensors
- ✓ Blade server ready
- ✓ Dry contact connector for audible alarms
- ✓ Intelligent outlet type and number recognition
- ✓ Available in 1, 4, 8, 10, and 16-port horizontal models, 16A and 32A
- ✓ Per-socket current monitoring
- ✓ Total current monitoring
- ✓ Input voltage monitoring



KWXM-ATS

Remote Monitored Automatic Transfer Switch

KWXM-ATS16A10X2-H2C20 Rackmount Automatic Transfer Switch is a new generation of intelligent Automatic Transfer Switch (ATS). It combines network power distribution and environmental monitoring technology to deliver consistent power to single-corded equipment. The KWXM-ATS16A10X2-H2C20 features dual input power cords that supply power to the connected load. In the event that the primary power source becomes unavailable, the unit seamlessly switches to the secondary power source without interrupting critical loads. This high-speed transfer rate ensures the transition is transparent to sensitive equipment. The KWXM-ATS16A10X2-H2C20 also provides remote monitoring of total current load and voltage. Users can receive SNMP-based or email alerts when power or environmental conditions exceed predefined thresholds. Access rights can be assigned to user groups or individual users.

Socket Types



x10



Reverse view of KWXM-ATS16A10X2-H2C20

Dimension

19 " Horizontal (W x D x H) = 19" x 206.9 x 44.45 mm



Items		Description	N1	N2	N3	N4
Monitor Functions	LED Display	Current Load of total pdu and per ports	✓	✓	✓	✓
		LED flashes when overload	✓	✓	✓	✓
		PDU Address, Version Number	✓	✓	✓	✓
	Managing software/Hyper Terminal	Total Current Load	✓	✓	✓	✓
		Monitors Current Load Per Ports	✗	✓	✗	✓
		Input Voltage	✓	✓	✓	✓
		Max. Voltage configured	✓	✓	✓	✓
		Max. Current configured	✓	✓	✓	✓
		Sensors state (optional)	✓	✓	✓	✓
Control Functions	PC Control	On/off of individual unit	✗	✗	✓	✓
		Power On /Off time setting	✗	✗	✓	✓
		Stay the same after restart	✗	✗	✓	✓
Accessing Method		RS 485 port	✓	✓	✓	✓
Daisy-chain ways		Serial and radiation connection	✓	✓	✓	✓

KWXM-ATS16A10X2-H2C20

KWXM-ATS16A10X2-H2C20 provides 10 x lockable IEC-C13 and 2 x C19. Provides Total Power Monitoring and outlets Metering, with the necessary flexibility. With embedded multithreading inner core RTOS (Real Time Operating Systems), the software supports multitask and multiuser access. RTOS software also supports various TCP/IP protocols, including HTTP, HTTPS, SSL, SNMP, TELNET, SSH, SMTP etc

Optional Features:

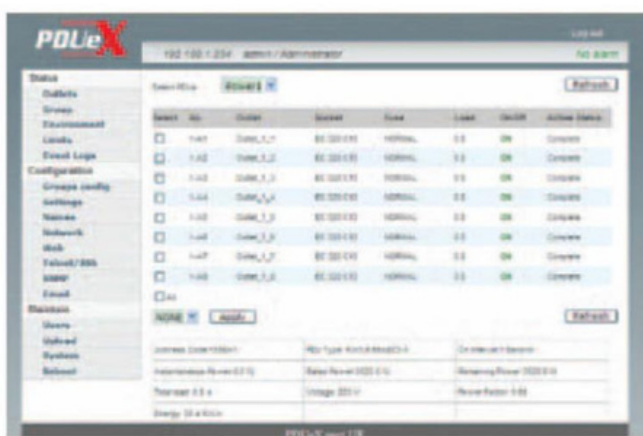
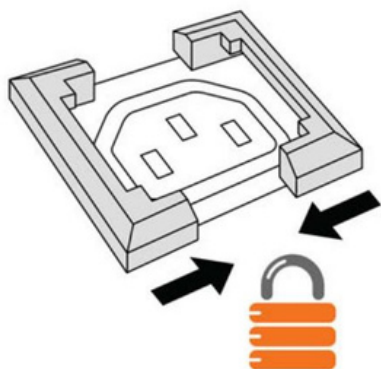
Temperature and humidity monitoring, smoke alarm, water leakage alarm, infrared alarm, door alarm.

Monitoring Functions:

Total current monitoring, total energy consumption (kWh) monitoring, input voltage monitoring, environmental temperature monitoring, environmental humidity monitoring, smoke detection monitoring, water leakage monitoring, infrared activity monitoring, door open status monitoring.

Alarm Settings:

Total current over-limit alarm, temperature over-limit alarm, humidity over-limit alarm, smoke alarm, water leakage alarm, infrared intrusion alarm, door open alarm, dry contact alarm.



KWX PDU SENSORS



Infrared Sensor



Door Sensor



**Temperature/
Humidity Sensor**



**Water Logging
Sensor**



Smoke Sensor