



Raritan
A brand of **Legrand**

NX1 BASIC PDUs

WHERE FLEXIBILITY AND ROCK-SOLID RELIABILITY MEET

Trusted by the world's largest data center operators, Raritan PDUs benefit from 30+ years of battle tested engineering and have been perfected by our data center experts to ensure uptime and availability.

The new Raritan NX1 PDU line has been carefully designed to adapt to the diversity of our customers' configurations.

Developed on a common platform, it provides solutions that fit your current needs and expectations, while anticipating for maintenance as well as future scaling and upgrades.

BENEFITS

- Reliable power distribution
- Protection against overloads with hydraulic magnetic circuit protection
- 60°C temperature rating for demanding applications
- Configure the PDU that meets your requirements



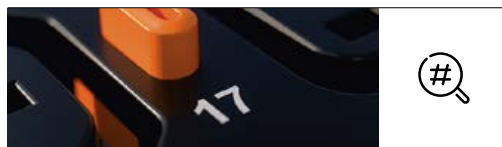
NX1 BASIC PDUs

Ensuring convenience and safety



CORD LOCKING SYSTEM

- For absolute safety, our autolocking outlets provide 100 Newton retention force
- No risk of accidental disconnection due to human error or vibration
- Compatible with all standard C14 and C20 plugs: no need for specific cords



NUMBERED OUTLETS

- Individual circuits and power outlets numbered from the input
- Facilitated power cord dressing



PDU COLOR-CODING

- Color-coded circuits and chassis are available on demand when extra identification is needed



330° ROTATING INPUT CORD

- Reduces tension on input
- Facilitates cable orientation and rack integration



HIGH-DENSITY OUTLET MODULES

Opt for our basic HD PDUs to benefit from more compact form factors and better airflow in the rack.



POWER CORDS WITH SERVER SIDE LOCKING

- Unique rotary locking mechanisms on C13 and C19 fitting any C14 and C20 server inlets
- Already secured on the Legrand PDU side thanks to the standard cord locking system



HOT SWAPPABLE LOCAL POWER METER

Some of our basic PDUs are equipped with a local power meter allowing:

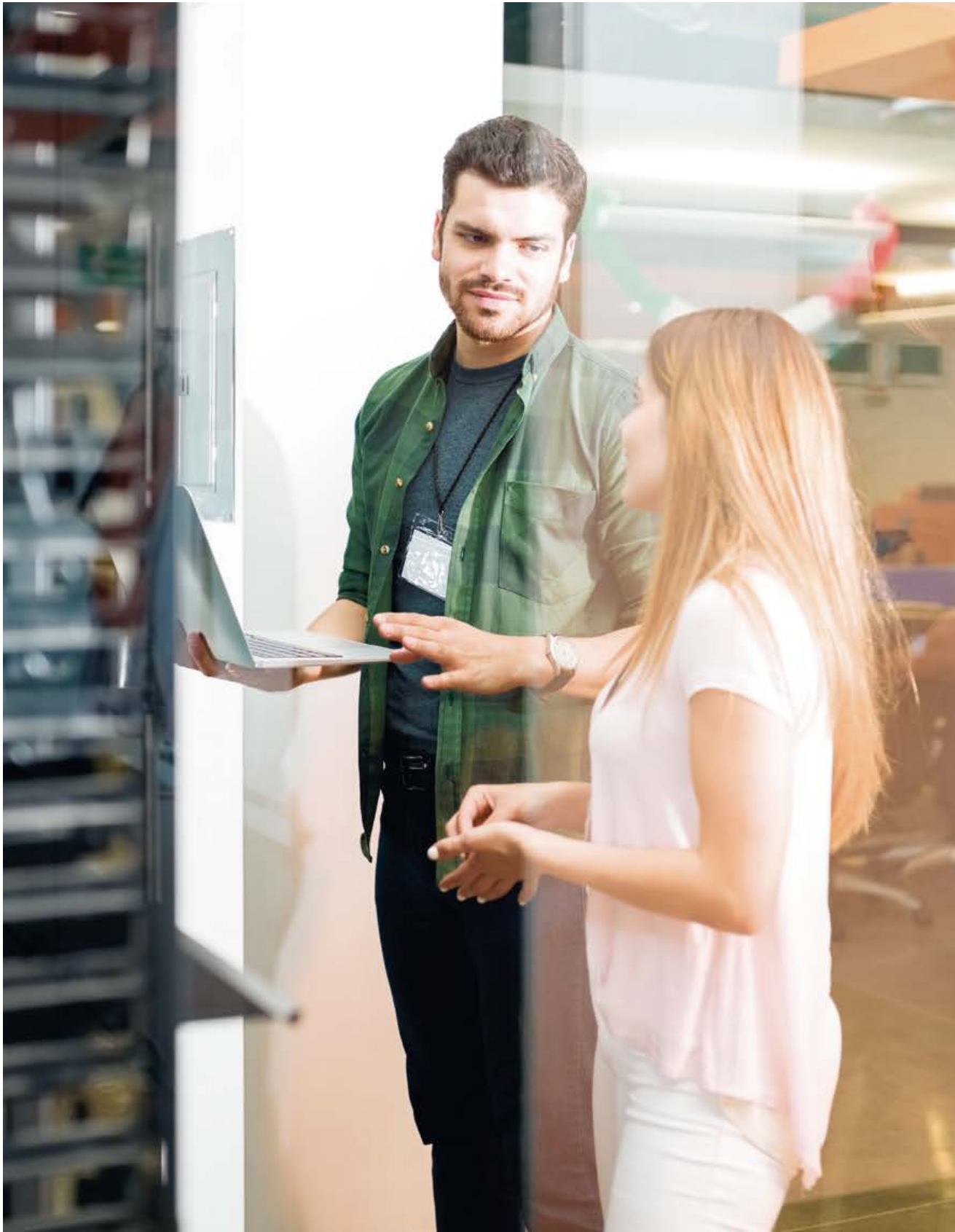
- visibility of all energy data: Amps, kWh, Volts, Power factor
- local alerts if load exceeds 80% of available capacity per line/circuit (beeping)
- phase, circuits and branch measurements with $\pm 1\%$ metering accuracy

The metering controller can be removed and replaced without turning down the PDU.



IMPROVING UPTIME

- 60°C rating aluminum chassis: the compact aluminum chassis withstands high ambient temperatures
- Hydraulic magnetic circuit protection: the NX1 platform offers hydraulic magnetic miniature circuit breakers with high ambient temperature tolerance for tripping, and high interruption capacity



NX1 BASIC PDUs

Existing configurations to meet your standard needs

	Form factor	Phase	Amps	Nb of C13 locking outlets	Nb of C19 locking outlets	Other options	Input cable	Part number
Basic PDUs	OU	1-phase	16A	18	6		3 m and IEC 60309 plug	NX1-B1100
				20	4		C20 inlet (accepts power cables 6 469 05 and 6 469 06)	NX1-B1101
			32A	12	12		3 m and IEC 60309 plug	NX1-B1301
				20	4		3 m and IEC 60309 plug	NX1-B1300
		3-phase	16A	21	3		3 m and IEC 60309 plug	NX1-B3100
				24	6		3 m and IEC 60309 plug	NX1-B3101
	1U	1-phase	16A	12	0		C20 inlet (accepts power cables 6 469 05 and 6 469 06)	NX1-B1102
				9	2		C20 inlet (accepts power cables 6 469 05 and 6 469 06)	NX1-B1103
				0	0	8 CEE 7/3 outlets and LED power indicator	3 m cord and German plug	NX1-B1104
				0	0	8 CEE 7/3 outlets and LED power indicator	3 m cord and French plug	NX1-B1105
				0	0	7 BS13 outlets and LED power indicator	3 m cord and British plug	NX1-B1106
Basic PDU with Local Power Meter	OU	1-phase	32A	20	4		3 m and IEC 60309 plug	NX1-BM1300
Basic HD PDUs	OU	1-phase	32A	24	12		3 m and IEC 60309 plug	NX1-BHD1300
				36	6		3 m and IEC 60309 plug	NX1-BHD1301
		3-phase	16A	24	12		3 m and IEC 60309 plug	NX1-BHD3101
				36	6		3 m and IEC 60309 plug	NX1-BHD3100
			32A	24	12		3 m and IEC 60309 plug	NX1-BHD3300
				36	6		3 m and IEC 60309 plug	NX1-BHD3302
					12		3 m and IEC 60309 plug	NX1-BHD3301
Basic HD PDU with Local Power Meter	OU	3-phase	16A	36	6		3 m and IEC 60309 plug	NX1-BMHD3100

	Designation		Part number
Power cables	IEC 60320 C19 to IEC 60309 - 16 A	1.5 m	6 469 05
		3 m	6 469 06
Brackets	1 set of mounting brackets for Nexpan rack for vertical mounting (0U mounting)		9 812 27
	10 sets of mounting brackets for Nexpan rack for vertical mounting (0U mounting)		9 812 28
Locking caps (light grey RAL 7035)	6 locking caps for C13 outlet + 1 key		6 468 94
	6 locking caps for C19 outlet + 1 key		6 468 95
Power cords C14 to C13 (server side locking)	Set of 10 black power cords	0.5 m	6 441 00
		1 m	6 441 01
		1.5 m	6 441 02
		2 m	6 441 03
	Set of 10 red power cords	0.5 m	6 441 06
		1 m	6 441 07
		1.5 m	6 441 08
		2 m	6 441 09
	Set of 10 blue power cords	0.5 m	6 441 12
		1 m	6 441 13
		1.5 m	6 441 14
		2 m	6 441 15
Power cords C20 to C19 (server side locking)	Set of 10 black power cords	1 m	6 442 01
		1.5 m	6 442 02
		2 m	6 442 03
	Set of 10 red power cords	1 m	6 442 07
		1.5 m	6 442 08
		2 m	6 442 09
	Set of 10 blue power cords	1 m	6 442 13
		1.5 m	6 442 14
		2 m	6 442 15

NX1 BASIC PDUs RANGE

Providing fast configuration to order

Need another configuration and/or functions?

Raritan is organized to configure PDUs as per your request.

Simply custom form-fit your PDU to your application.

OUTLET TYPES

- Our standard offer delivers a combination of C13 and C19
- PDUs can be configured by combining up to 3 outlet types: C13, C19, German, UTE or BS 1363

NUMBERING AND COLOR-CODING PER CIRCUIT OR PER FULL UNIT

- Our offer delivers black PDUs with numbering starting close to the inlet
- PDUs can be configured with numbering starting or finishing close to the inlet
- Various finishes available: red, blue, green, magenta, grey, orange, yellow, white or brown

FORM FACTOR 0U, 1U

- PDUs can be configured for 19" mounting or vertical mounting
- The new chassis design allows for high density C13 and C19 outlets to pack the most outlets in the smallest form factor

INPUT TYPE AND CORD LENGTH

- Choose inlet position:
 - top or bottom for 0U PDUs
 - left or right for 1U PDUs
- Choose inlet cord type:
 - at the front with rotatable cable entry
 - at the end with cable gland
 - IEC 60306, C20, C14, German, French, British or stripped connector
- Choose cable length from 0.5 to 6 meters in steps of 0.5 and between standard cables or LSZH ones
- Choose PDUs without inlet cords but inlet connections instead. C20 inlet, C14 inlet or to be wired on terminal block

ADDITIONAL FUNCTIONS

- LED power indicator available as an option to visually identify a powered PDU





**CONTACT YOUR LOCAL SALES
REPRESENTATIVE TO CREATE
A CONFIGURATION THAT MEETS YOUR
VERY SPECIFIC NEEDS**

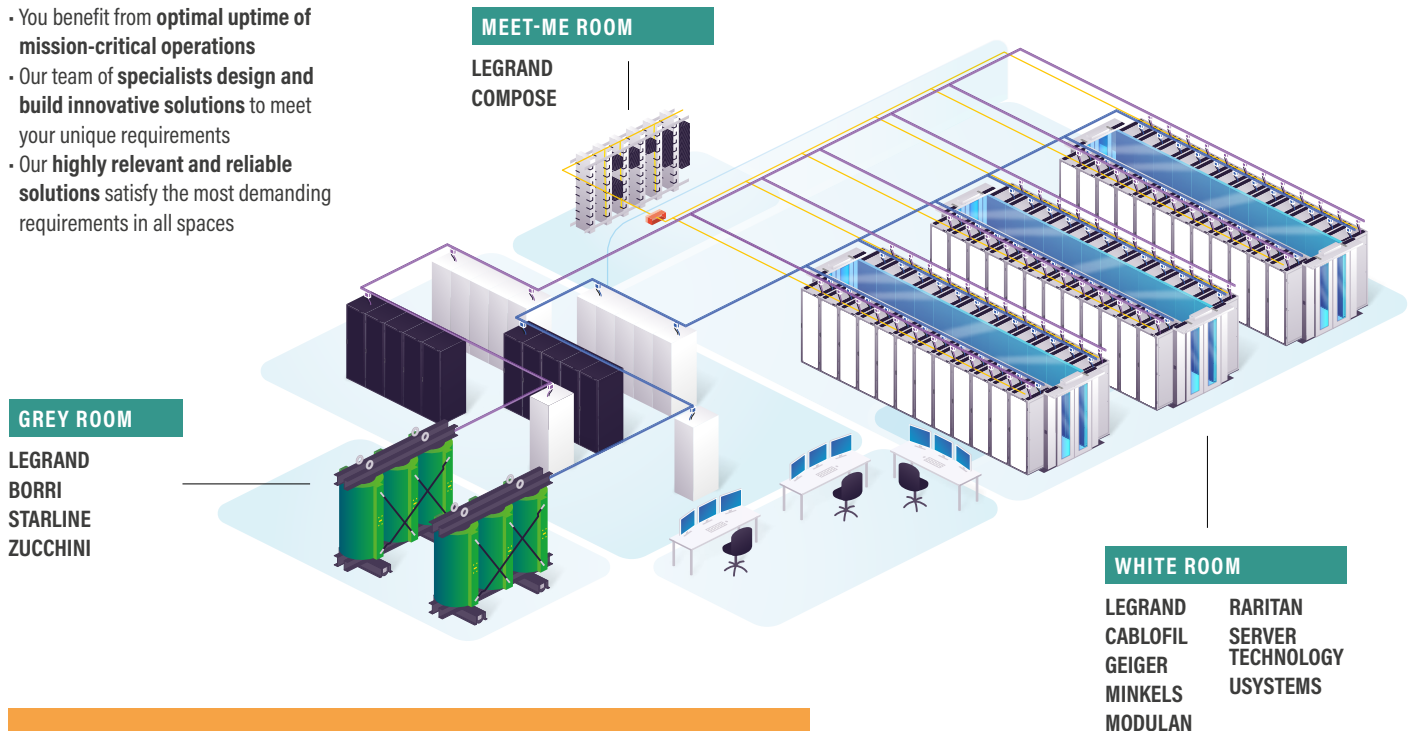
THE LEGRAND GROUP

A skilled and committed data center partner

INFRASTRUCTURES POWERED BY EXPERTS

Trust Legrand to empower your data center infrastructure: its extensive know-how, award-winning solutions, specialist brands and expert teams make the Group a partner of choice.

- You benefit from **optimal uptime of mission-critical operations**
- Our team of **specialists design and build innovative solutions** to meet your unique requirements
- Our **highly relevant and reliable solutions** satisfy the most demanding requirements in all spaces



We provide you with consistent high-quality and effective service operations through **local and central expert teams who work together to deliver you the same level quality wherever you are.**

A STRONG COMMITMENT TO GREEN DATA CENTERS

Sustainability has been everybody's challenge for years.

#LegrandImprovingLives means creating a more sustainable world for everybody. It is the Group's ambition to actively **contribute to the development of a low-carbon society**, in keeping with the RoHS directive (2015/863/UE) and the LEED Green Building Rating System.

In line with its CSR guidelines, not only does Legrand work on **reducing its carbon footprint** to fight climate change, but it gives priority to the **development of a circular economy approach**, limiting the quantity of materials used and promoting the reuse of materials. In connection with professional associations BICSI and The Green Grid, it aims to set the standard for **energy-efficient design**.

Every day, Legrand Group takes more steps on the path to green data centers.

As a proof of our circular economy approach, we provide customers with certified environmental declarations (Product Environmental Profiles - PEP), available on demand.



READ MORE ABOUT
THE LEGRAND GROUP'S
CRS STRATEGY ONLINE