



# Remote Power Management Solutions for Ultimate Control.



### Remote Power Models

Each unit has individually (relay) controlled AC power receptacles, enabling users to monitor current, voltage, power, and temperature.

#### 8-Port PCR8

1U rack mount

#### 12-Port PCS12

“zero-U” vertical mount

#### 20-Port PCS20

“zero-U” vertical mount

### Control power to data center devices anytime, anywhere.

Raritan's new remote power control units provide system administrators with the capability to securely monitor and control power to data center devices from any location via web browser, serial, or out-of-band access.

In the event of system failure and/or system lockup, rebooting is often the only option. For true “lights out” data center management, the ability to recover these systems remotely is vital. Raritan's Remote Power Control units eliminate the need to perform manual intervention or dispatch field personnel and reduce downtime, mean time to repair (MTTR), and ultimately increase productivity.

### Integrated solutions for total data center management.

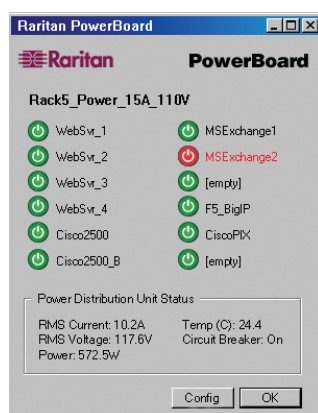
Raritan Remote Power Control offers total integration with Raritan's Paragon, IP-Reach™, and Dominion™ data center management solutions, enabling remote monitoring, reboot, and shutdown of all equipment without requiring expensive add-on equipment, navigation of multiple, disparate menus, or maintaining different levels of passwords and IDs. Access and control to the Remote Power Control units is accomplished through any of the following:

- Directly via the Paragon User Interface.
- Via a serially with AUATC Serial Terminal Converter or SCS232 ConsoleSwitch™.
- Via a Raritan PowerBoard applet with Dominion.
- Via a Raritan Remote Client with IP-Reach.

# Remote Power Control

Raritan Remote Power Control (RPC) units are available in 8-port (PCR8), 12 port (PCS12), and 20 port (PCS20) form factors. Each unit provides the means to turn On/Off or reboot equipment connected through it, and allow you to monitor current, voltage, power, and temperature.

Access and control is executed via Cat5 cable connection to an EIA-232 port. This port can be connected to any terminal server and/or external modem for dial-up access. In addition, RPC units are designed to provide integrated operation with Raritan's Paragon, IP-Reach and Dominion data center management solutions.



**Use the PowerBoard applet for integrated power control with Raritan's Dominion Solutions**

current reporting, the RPC units will report how much current (in amps) the attached equipment is drawing. An audible overload alarm will sound when a preset threshold is reached.

Each remote power control unit supports commands for receptacle control, status, and configuration.

Commands include: on, off, reboot, config, and status. The RPC units provide a response to indicate that commands have been acknowledged and completed. With True RMS current measurement and

- Voltage and temperature monitoring.
- 1U or "zero-U" form factor available.
- 15 or 20 Amp Power Rating.
- Available in multiple plug and receptacle form factors.
- Audible overload Alarm.

## Specs

### PCR8, PCS12, PCS20

Number of Receptacles	PCR8: 8 ports PCS12: 12 ports PCS20: 20 ports
Connection to Target Device	RJ45 CAT5e cable to EIA-232 serial port adapter

### PCR8

Dimensions	425mm (W) x 134mm (D) x 44mm (H)
Power Requirements	230V, 10 Amp
Operating Temperature	0° to 40° C
Regulatory Approvals	FCC Part 15 A, CE, ETL listed to CSA C22.2 60950, UL 60950

### PCR12

Dimensions	45mm (W) x 45mm (D) x 1423mm (H)
Power Requirements	230V, 10 Amp
Operating Temperature	0° to 40° C
Regulatory Approvals	FCC Part 15 A, CE, ETL listed to CSA C22.2 60950, UL 60950

### PCR20

Dimensions	45mm (W) x 45mm (D) x 1671mm (H)
Power Requirements	230V, 16 Amp
Operating Temperature	0° to 40° C
Regulatory Approvals	FCC Part 15 A, CE, ETL listed to CSA C22.2 60950, UL 60950

Standard Warranty

Two Years

## Features

- Total integration with Raritan's Paragon, IP-Reach, and Dominion solutions.
- True RMS current monitoring with overload alarm buzzer and indicator LED.
- Receptacle status retention during power loss.
- Individual or collective control of receptacles.
- Programmable unit ID and receptacle names.

**When you're ready to take control, do it with Remote Power Control**

**Call +31-10-2844040  
or visit [www.raritan.com](http://www.raritan.com).**

Raritan Computer, Inc., founded in 1985, is the leading provider of KVM (keyboard/video/mouse) and remote management solutions for access and control of servers and other network devices. With 18 consecutive years of profitable growth and technical innovation, Raritan makes products that are used to control millions of servers at more than 35,000 network data centers, computer test labs, and multi-workstation environments around the world. From the small business to the enterprise, Raritan's complete line of compatible and scalable KVM and remote connectivity products offers IT professionals the most reliable, flexible, and secure out of band solutions to manage data center equipment, while improving operational productivity.

Raritan is a registered trademark of Raritan Computer, Inc. Dominion, ConsoleSwitch and IP-Reach are trademarks of Raritan Computer, Inc.

**Raritan Computer Europe B.V., P.O. Box 566, 2900 AN Capelle aan den IJssel, The Netherlands**

**[www.raritan.com](http://www.raritan.com)**