

MXWALL-LP

8-INPUT UP TO 12-OUTPUT VIDEO WALL PROCESSOR AND MATRIX SWITCH



**ALL-IN-ONE VIDEO WALL AND MATRIX SOLUTION WITH 1080P FULL HD RESOLUTION OUTPUT,
INTEGRATED CONVERTER & SCALER, FLEXIBLE CREATIVE CONFIGURATION MODES,
AND USER FRIENDLY CONTROL SOFTWARE!**

FEATURES

- Complete hardware solution
- Plug-and-play ready
- 8 HDMI Inputs
- Up to 12 HDMI Outputs
- Supports DVI with adaptors
- 1080p (1920 x 1080 @ 60 Hz) Output Resolution
- Creative video wall display modes
- Easy control (software, RS-232 and TCP/IP)
- HDCP and HDMI 1.4 compliant
- User-Friendly MXwall Manager Software
- For 8x8, and 8x12 video wall setups

APPLICATIONS

- Corporate or Educational Presentations
- Airport Installations
- Wall Displays
- Digital Signage
- Dealer Rooms
- Control Rooms
- Shopping Centers
- Security
- Point-of-Sale Retail
- Entertainment Venues
- Corporate Lobbies
- Restaurants



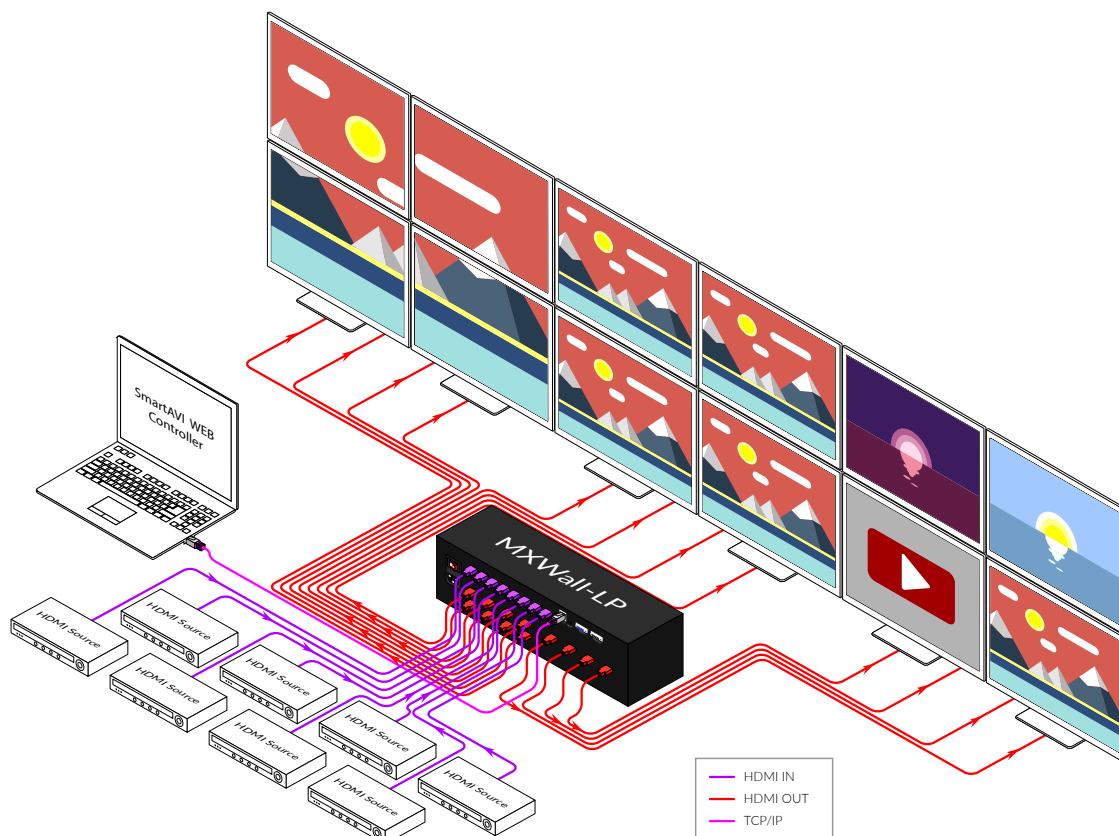
Designed and Manufactured in the USA

OVERVIEW

The MXWall-LP is a video wall processor and matrix switch with up to 12 HDMI outputs. Compact, plug-and-play, and excellent for mid-sized video wall displays between 4-12 screens with resolutions up to 1080p (1920 x 1080 @ 60 Hz) Full HD. With built-in multiviewer capabilities, the MXWALL-LP allows up to two input sources to be displayed simultaneously on any output screen, enhancing flexibility for dynamic content presentations.

The MXWall-LP is simple to control, featuring optional RS-232 control and SmartAVI's intuitive MXwall Manager software, which is included for free. MXwall Manager software lets users manually create and adjust their ideal video wall displays using simple click-and-drag operations, making it easy for users of any technical skill level. The MXWall-LP also features TCP/IP web control and a tablet software manager that works over WiFi, providing users with flexible control options.

Its compact design and powerful processing make the MXWall-LP an excellent solution for any video wall installation. Plug-and-play enabled, the MXWall-LP is immediately ready for use as soon as it is connected to an AV setup—no additional drivers or installers required. Its exceptional hardware delivers stunning video wall displays in environments such as retail spaces, educational facilities, conference rooms, command centers, event halls, entertainment venues, airports, and more.



TABLET SUPPORT FOR MXWALL MANAGER SOFTWARE

The MXwall Manager Software is now available for tablets running Android OS version 7 and above. Although the the MXwall tablet software will work with tablets that use various screen resolutions, it is recommended that you use a 1080p capable tablet for the best user experience. With the same functionality as the PC software, the tablet software gives users the option of controlling their MXwall with greater mobility. Whether you are giving an important presentation on stage or simply enjoying media content from the comfort of your bed or couch, the MXwall tablet software provides additional flexibility and gives you more options.

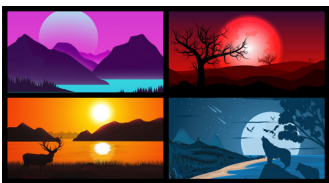
AVAILABLE CONFIGURATIONS

The MXWall-LP is highly configurable and can be utilized in a variety of ways using the simple drag and drop interface in the software manager.



VIDEO WALL CONFIGURATION

Project video from a single input source to every screen on your video wall for an impressive 1080p HD display!



INDIVIDUAL CONFIGURATION

Create dynamic video collages by sending video source signals individually from each input to any output on your video wall.

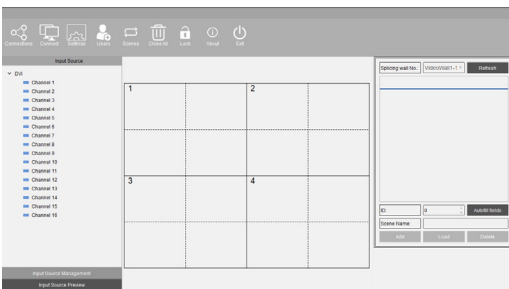


QUAD CONFIGURATION

Project video from a single input source to any four connected screens in your video wall. These attractive quad configurations are a great way to add variety to your displays!

MXWALL MANAGER SOFTWARE

The MXWall-LP also comes with SmartAVI's intuitive MXwall Manager software, which allows users to create amazing video wall displays in minutes. Its click-and-drag operation and simple layout ensure managing video walls is easy and effective every time!

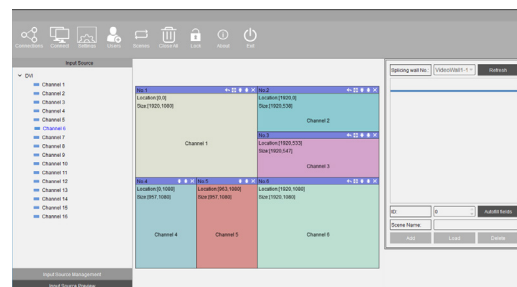


EASY TO USE

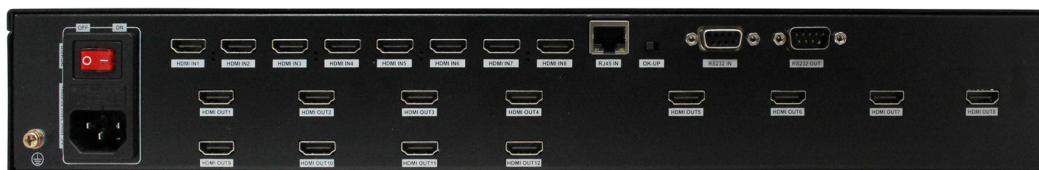
The MXwall Manager software features a streamlined layout that keeps things simple and clear. Our intuitive menus and settings interface ensure set-ups always are easy and stress-free. Choose from settings like aspect-ratio, rows, columns, video sources, and more! Adjust resolutions, scaling, and active monitors on the fly. Not happy with your current configuration? Just clear the workspace and start fresh: it's that simple!

FULLY CUSTOMIZABLE

Select any screen and input the source you would prefer. Two video sources can share a single screen simply by dragging and dropping. The possibilities are as endless as your creative potential!



FRONT AND BACK



MXWall-LP (8x12) Rear



MXWall-LP (8x12) Front

TECHNICAL SPECIFICATIONS

VIDEO	
Video Amplifier Bandwidth	3.2 Gbps
Input Video Signal	Video (TMDS) 0.5~1.0Vpp
Input DDC Signal	5 volts
Compliances	HDMI 1.4, HDCP
Pixel Rates	Clock frequency beyond 165Mpix/second
Format	4:4:4 and 4:2:2 data input formats
Resolution	480p, 720p, 1080i, 1080p
Input Card Format	4-port HDMI card
Output Card Format	4-port HDMI card
Input Slots	Up to 8 (2 cards)
Output Slots	Up to 12 (3 cards)
Video Type	RGB/YCBCR : 24/30/36-bits,YCBCR: 8/10/12/16/20/24-bits

CONTROLS	
RS-232	DB9 Female, 115200 BPS, N, 8, 1, No flow control
TCP/IP	RJ45, UDP
OTHER	
Working Temperature	32-122 °F (0-50 °C)
Storage Humidity	Up to 95% (No Condensation)
Weight	20 lbs
Dimensions	17 in (W) x 3.5 in (H) x 15 in (D)
Power Supply	50/60Hz, 100~240 VAC
Consumption	300W
MXwall MANAGER SOFTWARE	
Operating System	Windows 7-10, Android 7 and above

PART NO.	DESCRIPTION
MXWALL-LP-S	8-Input 12-Output Video Wall Processor and Matrix Switch. Includes: [MXWall-LP, (CCPWR06)]